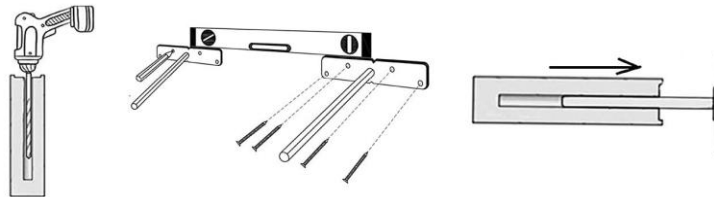


FLOATING SHELVES

INSTALLATION INSTRUCTIONS



- STEP 1** Mark a level line across the wall where the piece will be hung. Then mark the center point of where your mantel will fall on the line you just made. Lastly, make a mark on the back of your mantel, directly in the center (width wise) – so a 48” piece will have a mark at 24”
- STEP 2** Mark where your studs are located on the wall. It is important to make the marks on your level line so you can mount the brackets easily and not lose your markings
- STEP 3** Screw bracket(s) into appropriate locations making sure they are LEVEL – This is very important.
- STEP 4** Using the center mark as a reference – determine how far the protruding rods are from the line and mark the corresponding measurements on the back on the mantel. We recommend adding a piece of tape to your drill bit so you know where to stop! Making sure you are drilling straight, drill the holes just deep enough to accommodate the bracket. If you do not drill straight, the shelf will not fit over the brackets completely.
- STEP 5** Slide shelf/mantel over the brackets. Check for level and adjust accordingly.



Includes 2 Brackets with screws. *Please use common sense! We recommend you contact a local professional for additional mounting help if you are not familiar with the needed tools!*



Modern Timber Craft
401 E 4th St, Building 20
Bridgeport, Pennsylvania 19405

(866) 999-6635
info@moderntimbercraft.com
www.moderntimbercraft.com